

1/1.8 Inch 4KP60 PTZ Camera

iSmart Video



4K60@
DualCam



OIS



30x
Optical Zoom



12G-SDI
(Optional)



Powerful AI



Full NDI
Optional



PVC-230

NDI|HX3
Dante AV™
SRT

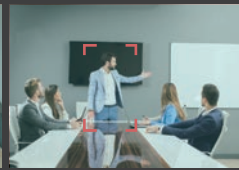
Powerful AI

The camera base integrates our AI cam to realize power AI functions for various applications, such as lecturer tracking, auto framing, designated tracking, gesture control etc.

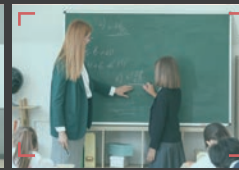
Take advantage of intuitive gesture control to operate the camera. Built-in AI gesture recognition eliminates touchpoints. Camera controls have never been easier or safer.



Auto Framing



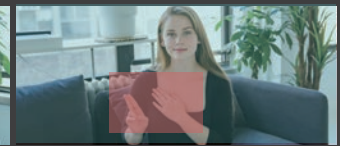
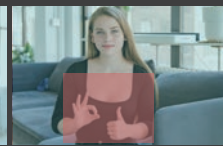
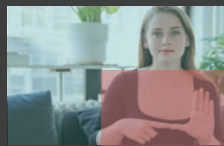
Designated Tracking



Zone Tracking



Lecturer Tracking



Gesture Control

4KP60 Ultra-HD Video

1/1.8" CMOS. 8.4MP UHD sensor, max 4KP60 video outputs. The camera brings professional ultra HD video with superb clarity, color, and details.



Dual-Cam Design

The full view cam provides AI based video analysis and powerful functions such as auto framing, Lecturer tracking and gesture controls etc.



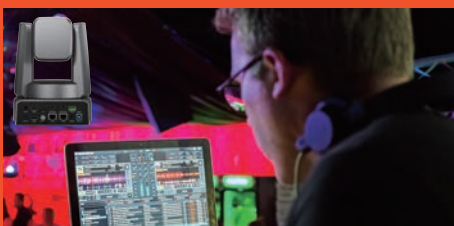
High Quality 30x Optical Zoom

Industry-leading 4K lens with 30x optical zoom and 59° HFOV gives you confidence in large areas with very long distance.



3G-SDI, HDMI, RJ45, USB3.0

The cameras gives you high flexibility for your video creation with professional interfaces including 3G-SDI, HDMI, RJ45 and USB3.0 and more. 12G-SDI is optional.



NDI|HX3, Dante AV-H, SRT

Protocols such as NDI HX3, Dante AV - H, and SRT can not only improve the quality of video transmission but also enhance its efficiency. With the optional Full NDI, it brings endless possibilities to video transmission.



Applications

The camera is ideal for a variety of remote video shooting applications, such as studio, auditoriums, teaching hospitals, corporate boardrooms, churches, sporting events, trade shows and concerts.



Technical Data

Model	PVC-230
Tracking Camera	
Image Sensor	1/1.8" CMOS, 8.46MP
Lens	Optical Zoom: 30x, Horizontal 59° ~ 2°, f=6.9 ~ 215mm, F1.3 ~ F4.6
Full View Camera	
Image Sensor	1/1.8"CMOS, 8.46MP
Lens	Horizontal 85°, f=4.4mm, F2.0
PTZ (Image Filp)	
Pan & Tilt	Pan: -170° ~ +170°; 0.05° ~ 120°/s; Tilt: -30° ~ +90°; 0.05° ~ 90°/s
Preset Number	256
Interface	
SDI	1×3G-SDI: Max 1080P60/P59.94/P50; 1×12G-SDI (Optional): Max 4KP60/P59.94/P50
HDMI	1 x HDMI 2.0, with audio output, color space supports YUV/RGB 444(8bit), YUV 422 (10bit),YUV 420 (8bit), up to 4KP60/P59.94/P50; 1080i60/i59.94/i50;
Network	1 x RJ45, 100M/1000M adaptive Ethernet port, standard POE, with audio output AAC/G.711 H.264/H.265/MJPEG: up to 4KP60; Network protocols: RTSP/RTMP/RTMPS/Visca Over IP/ONVIF/SRT/NDI HX2/NDI HX3/Dante AV-H; Supports dual output for main and sub streams; Supports WEB UI, CGI, HTTP
USB3.0	1 x USB 3.0 Type-A (compatible with HOST), supports audio output UAC, supports color space RGB 420 USB 3.0 is backward compatible with USB 2.0: UVC supports UVC 1.1 protocol;UVC video formats supported: H.264/H.265/MJPEG: up to 4KP60; YUY2/NV12: up to 1080P30;
One of Three Options	Optional Full NDI, HDBaseT, or SDVoE
Audio	2 Audio-Input XLR Connectors, with Phantom Power Support; Supports ACC/UAC; Sample Rates: 16k, 32k, 48k
Reset Button	Restore Factory Settings
Control Interface	1 RS-232/422 Port
Security Lock Slot	1 Kensington Lock
Memory Card	Supports 1 external Micro SD slot, with a maximum storage capacity of 2TB.
General	
Power	DC12V, 5A
Indicator Light	Power light, status light, dual Tally lights
Installation Method	Upright, inverted (panoramic lens adjustable±20°)
Remote Control Range	15m, dual infrared in front and rear of camera
Operating Environment	Temperature: 0°C ~ +40°C; Relative Humidity: 10%RH ~ 90%RH
Storage Environment	Temperature: -20°C ~ +60°C; Relative Humidity: 10%RH ~ 95%RH
Dimensions (L*W*H)	239mm × 208mm × 291mm

Hangzhou Chingan Tech Co., Ltd

Add: 4F, Bldg. 4, 16# Xiyuan Yi Road, Hangzhou, China
www.ismart-video.com/sales@ismart-video.com



Website



Linkedin



YouTube

