

4/3" 4KP60 PTZ Camera

iSmart Video



PDAF



OIS



12G-SDI



Free-D



4KP60@
DualCam



20x
Optical Zoom



Full NDI
Optional



Powerful AI

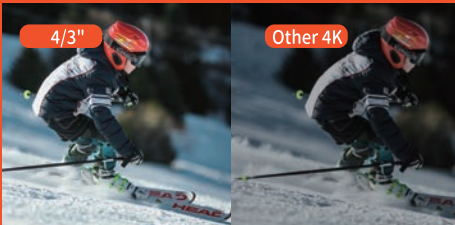


PBC-120

NDI[®]
Dante AV[™]
SRT

4/3" CMOS, 4KP60

4/3" CMOS, 20MP UHD sensor, max 4KP60 video outputs. Support AE, AWB, PDAF, CDAF, Face AF. ND filters for better image quality.



20x Optical Zoom

Industry-leading 4K lens with 20x optical zoom and 71° HFOV gives you confidence in large areas with long distance.



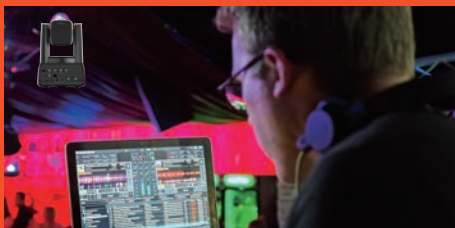
Optical Image Stabilization

The lens supports optical image stabilization, resulting in sharp video for fast-moving objects or low shutter speed requirements.



12G-SDI, 3G-SDI, HDMI, RJ45, USB3.0

The camera gives you high flexibility for your video creation with professional interfaces including 12G-SDI, 3G-SDI, HDMI, RJ45 and USB3.0 and more. The leading 12G-SDI interface brings much more bandwidth than ever and major benefits for live events, broadcast studios, on set and live venues.



NDI HX3, Dante AV-H, SRT

Protocols such as NDI HX3, Dante AV - H, and SRT can not only improve the quality of video transmission but also enhance its efficiency. With the optional Full NDI, it brings endless possibilities to video transmission.



Free D

Free D is a protocol of sending PTZ positioning data to AR/VR systems including Unreal Engine, Brainstorm, Vizrt's Viz Virtual Studio, and many others. The camera now build in the Free D protocol. An virtual studio now is possible.



Optional Dual-Cam Design for Powerful AI

The camera base can integrate our AI cam to realize powerful AI functions for various applications, such as zone tracking, auto framing, lecturer tracking, gesture control etc.



Auto Framing



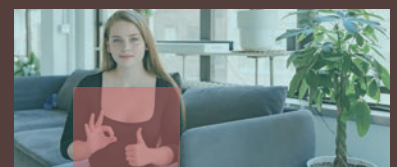
Designated Tracking



Zone Tracking



Lecturer Tracking



Gesture Control

Technical Data

Model	PBC-120
Zoom Camera	
Image Sensor	4/3" CMOS, 20MP, Max: 4KP60
ND Filter	Switchable: 1/64, 1/16, 1/4, 1
Lens	Optical Zoom: 20x, Horizontal 71° ~ 4°, f=9.8 ~ 186mm, F2.8 ~ F4.5
Full View Camera	
Image Sensor	1/1.8" CMOS, 8.46MP, up to 4KP60
Lens	Horizontal 85°, f=4.4mm, F2.0
PTZ (Image Flip)	
Pan&Tilt	Pan: -170° ~ +170°; 0.05° ~ 120°/s; Tilt: -30° ~ +90°; 0.08° ~ 90°/s
Preset Number	256
Interface	
SDI	1×12G-SDI: Max 4KP60/P59.94/P50, 1080i60/i59.95/i50; 1×3G-SDI: 1080P60/P59.94/P50i60/i59.95/i50
HDMI	1 x HDMI 2.0, with audio output, color space supports YUV/RGB 444 (8bit), YUV 422 (10bit), YUV 420 (8bit), up to 4K@60/P59.94/P50; 1080i@60/i59.94/i50;
Network	1 x RJ45, 100M/1000M adaptive Ethernet port, standard POE, with audio output AAC/G.711 VH.264/H.265/MJPEG; up to 4K@60; Network protocols supported: RTSP/RTMP/RTMPS/Visca Over IP/ONVIF/SRT/NDI HX2/NDI HX3/Dante AV-H; Supports dual output for main and sub streams; Supports WEB UI, CGI, HTTP
USB	1 x USB 3.0 Type-A(compatible with HOST), supports audio output UAC, supports color space RGB 420 USB 3.0 is backward compatible with USB 2.0: UVC supports UVC 1.1 protocol; H.264/H.265/MJPEG: up to 4K@60; YUY2/NV12: up to 1080P@30;
Gen- Lock	1 BNC external synchronization Gen-Lock interface
SFP	1 optical fiber interface, configurable to 12G-SDI
One of Three Options	Optional Full NDI, HDBaseT, or SDVoE
Audio	2 Audio-Input XLR Connectors, with Phantom Power Support; Supports ACC/UAC; Sample Rates: 16k,32k, 48k
Reset Button	Restore Factory Settings
Control Interface	1 RS-232/422 Port, Supporting Visca, Pelco-P, and Pelco-D Command Protocols.
Security Lock Slot	1 Kensington Lock
Memory Card	Supports 1 external Micro SD slot, with a maximum storage capacity of 2TB.
General	
Power	DC12V, 5A
Indicator Light	Power light, status light, dual Tally lights
Installation Method	Upright, inverted(panoramic lens adjustable±20°)
Remote Control Range	15m, dual infrared in front and rear of camera
Dimensions (L*W*H)	239mm × 208mm ×291mm

Hangzhou Chingan Tech Co., Ltd

Add: 4F, Bldg. 4, 16# Xiyuan Yi Road, Hangzhou, China
www.ismart-video.com/sales@ismart-video.com



Website



Linkedin



YouTube

